

# Media Release

## **Preliminary World Airport Traffic 2010** **Passenger traffic up 6.3%; Cargo up 15.2%**

**Montreal, 15 March 2011** – ACI preliminary traffic results, based on reports from over 900 airports worldwide, indicate that global passenger traffic grew at a better than expected rate of 6.3 percent and cargo rose strongly by 15.2 percent, as compared to 2009. Aircraft movements remained stable at just under 1 percent.

ACI World Director General Angela Gittens comments, “2010 underscored the resilience of the air transport business and resulted in over 5 billion annual passengers for the first time ever. 2010 also pronounced the shift and divergence in growth across the regions. While North America and Europe have struggled to reach pre-crisis passenger volumes, Asia-Pacific, Latin America-Caribbean and Middle East sustained a strong momentum and gained market share through double digit growth.”

Monthly passenger growth worldwide in 2010 was consistently high between 5 percent and 10 percent with the exception of a significant setback in April due to the volcanic ash cloud that hit Europe particularly hard. Another anomaly impacting traffic mainly in Europe was the unusually harsh winter weather in December. Despite these setbacks Europe still registered growth of 4.3 percent in 2010 thanks to strong international summer and fall traffic.

A slow economic recovery and restraint of air carriers in adding domestic capacity has led to modest growth in North America of 2.4 percent keeping passenger numbers below pre-crisis levels in that region.

Asia-Pacific has benefited from a 14.2 percent rise of international passengers resulting in a total increase of 11.5 percent. Latin America-Caribbean enjoyed strong domestic traffic growth particularly in Brazil and other Latin American countries as national economies and low cost carriers expand quickly.

International traffic was also important in Africa which registered 8.8 percent more passengers in total while 11.5 percent more passengers arrived and departed in the Middle East.

The recovery was more coherent and comprehensive in the freight sector where all regions showed a robust double digit increase led by Asia-Pacific (+18.6%) and Europe (+17%). International freight was the driver of the air freight recovery as total tonnage jumped by 20.5 percent compared to 2009.

Aircraft movements increased the most in Latin America-Caribbean (+6.2%), Middle East (+6.1%) and Asia-Pacific (+5%) while movements continued to decline in Europe (-0.4%) and North America (-1.2%).

Gittens concludes, "Passenger and freight growth clearly surpassed global GDP growth in 2010. GDP growth projections for this and the coming years are high creating a positive outlook for demand for air transport. This underpins the need to continue to expand and modernize airport infrastructure to maintain high standards of efficiency and customer service. More than ever, airports will be asked to finance these projects autonomously without public funds requiring private and public airports to be empowered to generate necessary returns on their investment."

### **Airport ranking**

Among the largest airports in the world Beijing (+13%) leaped to the second rank eyeing Atlanta (+1.5%) which continues to be the world's largest airport. London Heathrow dropped to the fourth rank overtaken by Beijing and Chicago O'Hare (+3.3%). Only two airports in the top 30 did not grow in 2010, Las Vegas (-2.6%) and London Heathrow (-0.2%). Charlotte (+10.4%) was the only large airport outside Asia-Pacific and Middle East growing by more than 10 percent. See tables 1, 2, 3.

### **SUMMARY: PRELIMINARY RESULTS FOR 2010, compared to 2009**

Total Passengers: **+6.3%**

Total International Passengers: **+7.5%**

Total Cargo (includes mail): **+15.2%**

Total International Freight: **+20.5%**

Total Aircraft Movements: **+0.8%**

*\* Please note that all figures and percentages are based on submissions by 906 airports. The final confirmed report will be published in July 2011 and will include 1300+ airports; therefore figures are subject to variation.*

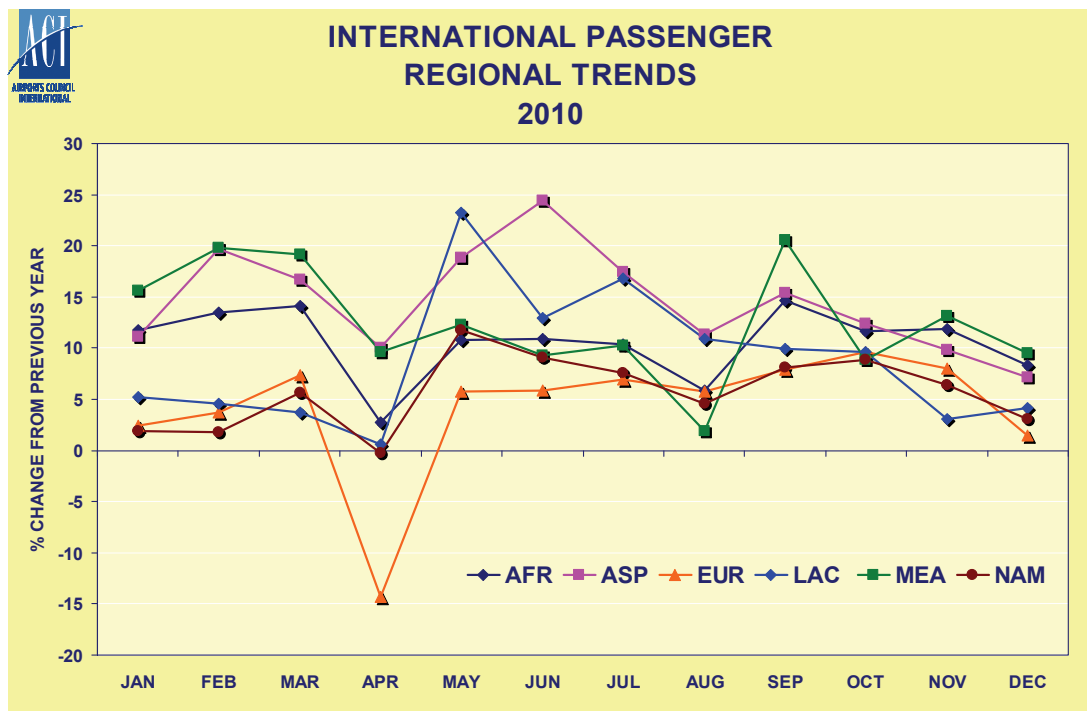
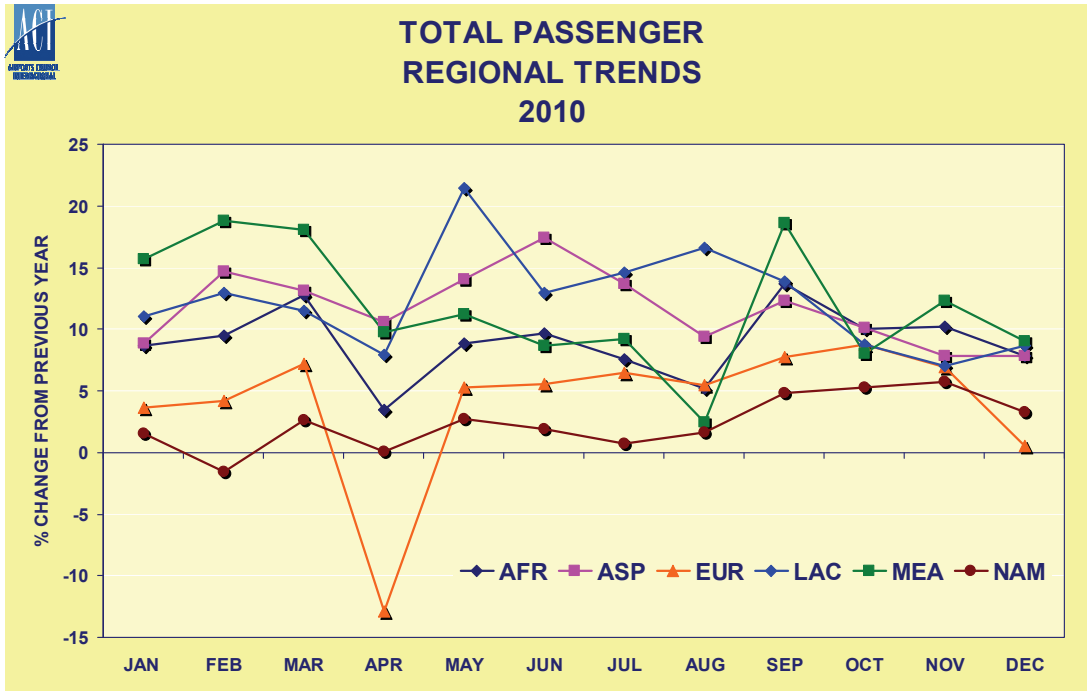
### **Notes for Editors**

1. ACI, the only worldwide association of airports, is a non-profit organization whose prime purpose is to represent the interests of airports and to promote professional excellence in airport management and operations. ACI has 580 members who operate over 1650 airports in 179 countries and territories.

2. For queries concerning the statistics, please contact Nancy Gautier, Director Communications at ACI World [ngautier@aci.aero](mailto:ngautier@aci.aero) or Jenny Waddell, Communications Manager ACI World [jwaddell@aci.aero](mailto:jwaddell@aci.aero)

3. Please note that preliminary results are based on the submissions of over 900 reporting entities, representing 93 percent of global traffic. The final confirmed report, which will be published in July 2011, will include any outstanding airport reports (total will be over 1300 airports), and therefore figures are subject to slight variation.

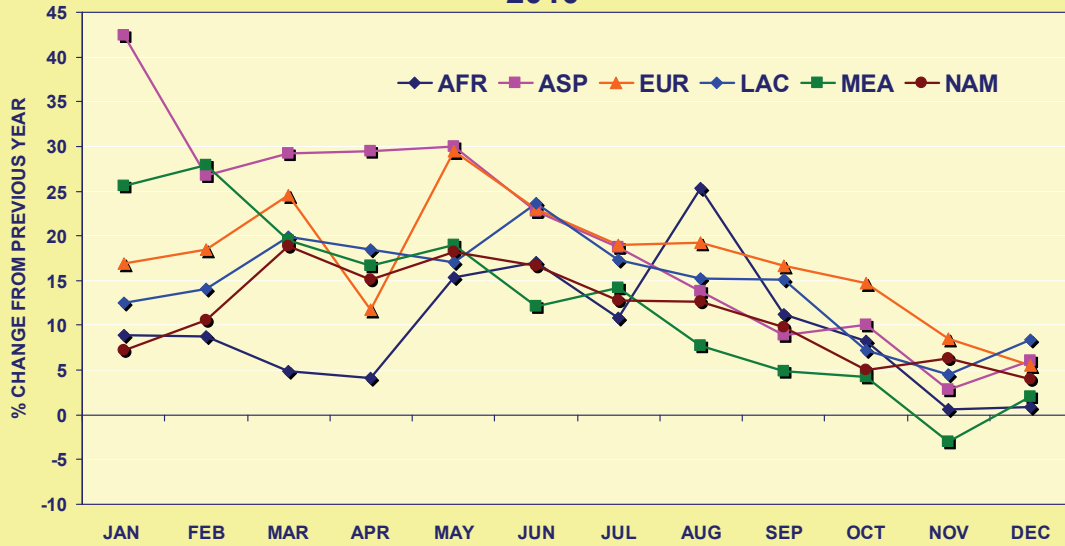
## Charts and tables



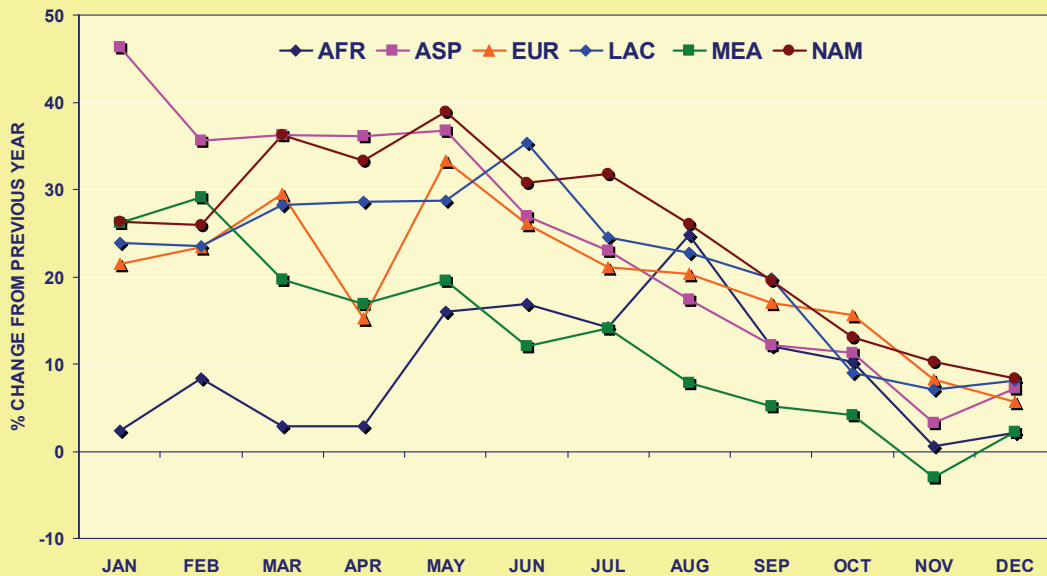
- more -



### TOTAL CARGO REGIONAL TRENDS 2010



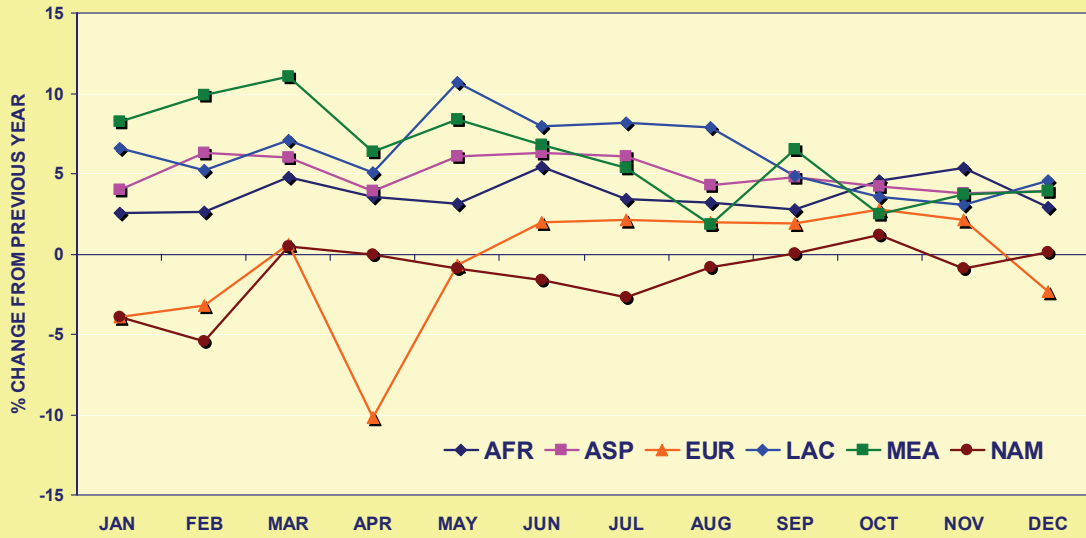
### INTERNATIONAL FREIGHT REGIONAL TRENDS 2010



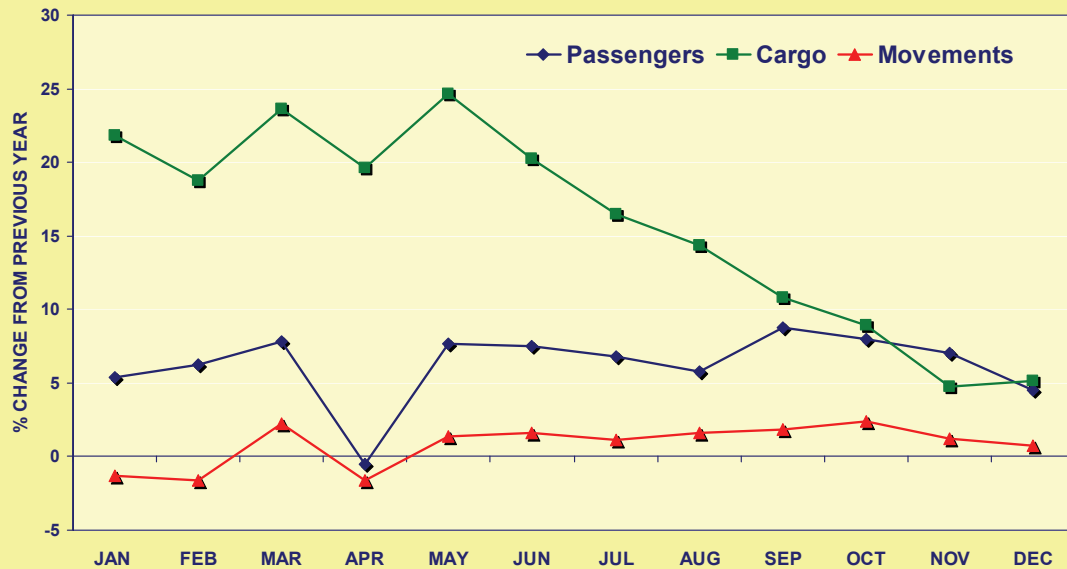
- more -



## TOTAL MOVEMENTS REGIONAL TRENDS 2010



## EVOLUTION OF AIRPORT TRAFFIC WORLDWIDE 2010



- more -

## WORLDWIDE AIRPORT TRAFFIC REPORT SUMMARY

### Preliminary Results 2010

STATS REGIONS	PASSENGERS	percent change	CARGO	percent change	MOVEMENTS	percent change
AFR	126 950 421	8.8	1 107 764	9.4	1 998 532	3.7
ASP	1 171 232 331	11.5	30 568 352	18.6	10 048 632	5.0
EUR	1 409 464 291	4.3	17 337 248	17.0	17 596 411	(0.4)
LAC	360 994 685	12.1	4 335 375	14.1	5 631 185	6.2
MEA	125 775 339	11.5	4 500 502	11.8	1 144 824	6.1
NAM	1 457 930 721	2.4	25 021 564	11.2	27 999 158	(1.2)
<b>ACI</b>	<b>4 652 347 788</b>	<b>6.3</b>	<b>82 870 804</b>	<b>15.2</b>	<b>64 418 742</b>	<b>0.8</b>

**Passengers** total passengers enplaned and deplaned; passengers in transit counted once.

**Cargo** loaded and unloaded freight and mail in metric tonnes.

**Movements** landing or take-off of an aircraft.

Number of participating airports by region included in this summary in 2010: 905  
AFR: 104; ASP: 1230; EUR: 306; LAC: 180; MEA: 14; NAM: 178

## INTERNATIONAL PASSENGER & FREIGHT SUMMARY

### Preliminary Results 2010

STATS REGIONS	INTERNATIONAL PASSENGERS	percent change	INTERNATIONAL FREIGHT	percent change
AFR	84 780 969	10.4	973 123	9.1
ASP	429 453 267	14.2	21 544 108	22.5
EUR	1 006 497 914	4.5	13 083 517	19.2
LAC	107 718 215	8.3	2 930 542	20.6
MEA	111 039 901	12.1	4 335 251	12.0
NAM	197 066 924	5.7	7 514 962	24.2
<b>ACI</b>	<b>1 936 557 190</b>	<b>7.5</b>	<b>50 381 503</b>	<b>20.5</b>

**International (Passengers/Freight)** traffic (passengers and freight) performed between the designated airport and an airport in another country/territory

**Freight** comprises goods, newspapers, diplomatic bags, parcel post and express parcel; does not include passenger baggage and trucked freight; loaded and unloaded in metric tonnes.

Number of participating airports by region included in the international summary in 2009: 599  
AFR: 80 ASP: 82 EUR: 246 LAC: 105 MEA: 14 NAM: 72

- more -

## WORLD'S BUSIEST AIRPORTS – Preliminary Ranking

### Table 1 – AIRCRAFT MOVEMENTS 2010

RANK	AIRPORT	MOVEMENTS	
		Take-off and Landings	Percent change
1	ATLANTA GA, US (ATL)	950 119	(2.1)
2	CHICAGO IL, US (ORD)	882 614	6.4
3	DALLAS/FORT WORTH TX, US (DFW)	652 261	2.1
4	DENVER CO, US (DEN)	630 089	3.8
5	LOS ANGELES CA, US (LAX)	575 835	5.3
6	HOUSTON TX, US (IAH)	531 347	(1.3)
7	CHARLOTTE NC, US (CLT)	529 101	3.9
8	BEIJING, CN (PEK)	517 582	6.0
9	LAS VEGAS NV, US (LAS)	505 591	(1.1)
10	PARIS, FR (CDG)	499 997	(4.8)
11	FRANKFURT, DE (FRA)	464 432	0.3
12	PHILADELPHIA PA, US (PHL)	460 779	(2.5)
13	LONDON, GB (LHR)	454 883	(2.5)
14	DETROIT MI, US (DTW)	452 616	4.6
15	PHOENIX AZ, US (PHX)	450 293	(1.5)
16	MINNEAPOLIS MN, US (MSP)	434 120	0.4
17	MADRID, ES (MAD)	433 683	(0.3)
18	TORONTO ON, CA (YYZ)	418 051	2.6
19	AMSTERDAM, NL (AMS)	402 374	(1.1)
20	NEWARK NJ, US (EWR)	401 930	(2.2)
21	NEW YORK NY, US (JFK)	397 419	(4.1)
22	MUNICH, DE (MUC)	389 939	(1.7)
23	SAN FRANCISCO CA, US (SFO)	387 248	2.0
24	MIAMI FL, US (MIA)	376 208	7.1
25	PHOENIX AZ, US (DVT)	367 651	(8.6)
26	SALT LAKE CITY UT, US (SLC)	361 954	(2.6)
27	NEW YORK NY, US (LGA)	360 544	1.9
28	BOSTON MA, US (BOS)	352 641	2.1
29	TOKYO, JP (HND)	342 804	2.1
30	MEXICO CITY, MX (MEX)	339 898	(2.3)

- more -

## WORLD'S BUSIEST AIRPORTS – Preliminary Ranking

### Table 2 – TOTAL PASSENGER TRAFFIC 2010

RANK	AIRPORT CITY / COUNTRY/CODE	PASSENGERS	
		(Enplaning and deplaning)	Percent change
1	ATLANTA GA, US (ATL)	89 331 622	1.5
2	BEIJING, CN (PEK)	73 891 801	13.0
3	CHICAGO IL, US (ORD)	66 665 390	3.3
4	LONDON, GB (LHR)	65 884 143	(0.2)
5	TOKYO, JP (HND)	64 069 098	3.4
6	LOS ANGELES CA, US (LAX)	58 915 100	4.2
7	PARIS, FR (CDG)	58 167 062	0.4
8	DALLAS/FORT WORTH TX, US (DFW)	56 905 066	1.6
9	FRANKFURT, DE (FRA)	53 009 221	4.1
10	DENVER CO, US (DEN)	52 211 242	4.1
11	HONG KONG, HK (HKG)	50 410 819	10.6
12	MADRID, ES (MAD)	49 786 202	2.8
13	DUBAI, AE (DXB)	47 180 628	15.4
14	NEW YORK NY, US (JFK)	46 495 876	1.4
15	AMSTERDAM, NL (AMS)	45 211 749	3.8
16	JAKARTA, ID (CGK)	43 981 022	18.4
17	BANGKOK, TH (BKK)	42 784 967	5.6
18	SINGAPORE, SG (SIN)	42 038 777	13.0
19	GUANGZHOU, CN (CAN)	40 975 253	10.6
20	SHANGHAI, CN (PVG)	40 582 356	27.2
21	HOUSTON TX, US (IAH)	40 475 058	1.2
22	LAS VEGAS NV, US (LAS)	39 397 359	(2.6)
23	SAN FRANCISCO CA, US (SFO)	39 254 634	5.1
24	PHOENIX AZ, US (PHX)	38 552 409	1.9
25	CHARLOTTE NC, US (CLT)	38 143 078	10.4
26	ROME, IT (FCO)	36 228 490	7.4
27	SYDNEY, AU (SYD)	35 992 164	7.6
28	MIAMI FL, US (MIA)	35 698 025	5.3
29	ORLANDO FL, US (MCO)	34 877 507	3.5
30	MUNICH, DE (MUC)	34 721 605	6.2

- more -

## WORLD'S BUSIEST AIRPORTS – Preliminary Ranking

### Table 3 – TOTAL CARGO TRAFFIC 2010

RANK	AIRPORT	CARGO (Metric tonnes)	
		Loaded and unloaded	Percent change
1	HONG KONG, HK (HKG)	4 168 394	23.2
2	MEMPHIS TN, US (MEM)	3 916 937	5.9
3	SHANGHAI, CN (PVG)	3 227 914	27.1
4	INCHEON, KR (ICN)	2 684 500	16.1
5	ANCHORAGE AK, US (ANC)*	2 578 396	33.1
6	PARIS, FR (CDG)	2 399 067	16.8
7	FRANKFURT, DE (FRA)	2 275 106	20.5
8	DUBAI, AE (DXB)	2 270 498	17.8
9	TOKYO, JP (NRT)	2 167 843	17.1
10	LOUISVILLE KY, US (SDF)	2 166 226	11.1
11	SINGAPORE, SG (SIN)	1 841 004	10.9
12	MIAMI FL, US (MIA)	1 835 793	17.9
13	LOS ANGELES CA, US (LAX)	1 810 345	15.5
14	TAIPEI, TW (TPE)	1 767 075	30.1
15	LONDON, GB (LHR)	1 551 405	15.0
16	BEIJING, CN (PEK)	1 549 126	5.0
17	AMSTERDAM, NL (AMS)	1 538 135	16.8
18	CHICAGO IL, US (ORD)	1 424 077	30.0
19	NEW YORK NY, US (JFK)	1 343 114	17.4
20	BANGKOK, TH (BKK)	1 310 146	25.3
21	GUANGZHOU, CN (CAN)	1 144 458	19.8
22	INDIANAPOLIS IN, US (IND)	947 279	5.2
23	NEWARK NJ, US (EWR)	854 750	9.6
24	SHENZHEN, CN (SZX)	809 363	33.6
25	TOKYO, JP (HND)	804 995	1.9
26	OSAKA, JP (KIX)	759 278	24.7
27	LUXEMBOURG, LU (LUX)	705 370	12.2
28	KUALA LUMPUR, MY (KUL)	697 015	15.6
29	MUMBAI, IN (BOM)	671 238	18.5
30	ATLANTA GA, US (ATL)	659 129	17.0

- END -